

# Profim Standard fabrics

## ALBA (FIDIVI) - PRICE GROUP 0

Alba is a uni-coloured polyester fabric with a grainy texture. The weave construction play with light and add depth to the colours.

**Composition:** 100% polyester

**Weight:** 320 +/- 5% g/m<sup>2</sup>

**Abrasion resistance:** 100 000 Martindale (EN ISO 12947-2)

**Flammability:** BS EN 1021: 1-2 (Cigarette & match), CA TB 117-2013, BS 5852 Crib 5, BS 7176 Medium Hazard, UNI 9175 Class 1 IM

**Light fastness:** 6 (EN ISO 105 - B02: 2013)

**Rubbing fastness:** 4/5 (Wet/Dry) (ISO 105-X12)

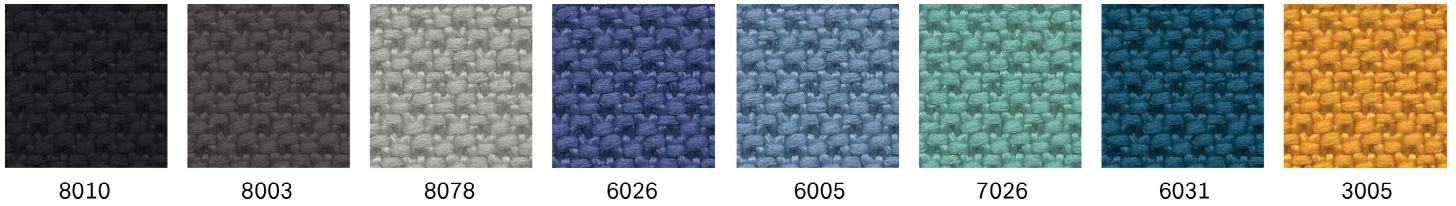
**Pilling:** 5 (EN ISO 13945-2)

**Environmental facts:** Oeko-Tex® Standard 100, Indoor Advantage™ "Gold", non-metallic dyestuff, does not contain flame-retardant chemicals, ISO 14001 certified company.

**Design:** FIDIVI Design Team

**Produced in:** South Korea

**Cleaning & disinfection:** Washable up to 60°, dry cleanable with perchloroethylene, cleanable with steam, bleach and the most common sanitizing agents. (For further info follow FIDIVI's cleaning guidelines - [www.fidivi.com](http://www.fidivi.com))



## EVO - PRICE GROUP 0

Evo is a uni-coloured polyester crepe fabric. The irregular weave structure add shine and good stretch.

**Composition:** 100% polyester

**Weight:** 320 g/m<sup>2</sup>

**Abrasion resistance:** 180 000 Martindale (EN ISO 12947-2)

**Flammability:** BS EN 1021: 1-2 (Cigarette & match)

**Light fastness:** 4-5 (EN ISO 105-B02)

**Rubbing fastness:** 4-5 (Wet/Dry) (EN ISO 105-X12)

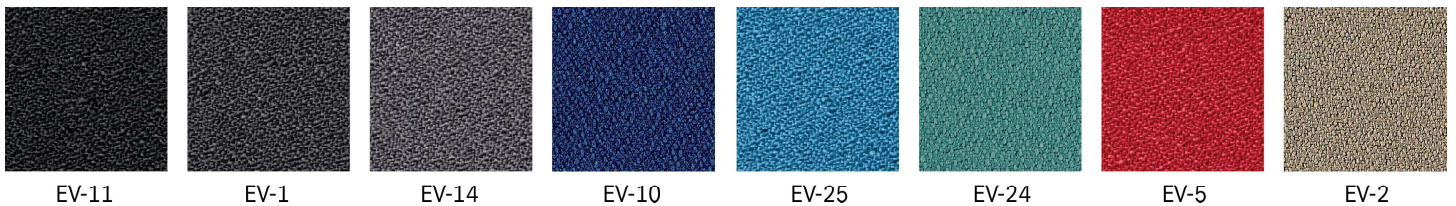
**Pilling resistance:** 5 (EN ISO 12945-2)

**Environmental facts:** EU Ecolabel, Oeko-Tex® Standard 100, ISO 14001 certified company

**Design:** Miranda Design Team

**Produced in:** Poland

**Cleaning & disinfection:** Dry cleaning with tetrachloroethylene and water solution of carbonate fluoride



## NEXT - PRICE GROUP 0

Next is a polyester fabric in solid and mixed colors. It is lightly textured with a semi-gloss surface.

**Composition:** 100% polyester

**Weight:** 340 g/m<sup>2</sup>

**Abrasion resistance:** 100,000 Martindale (EN ISO 12947-2)

**Flame safety:** BS EN 1021: 1-2 (Cigarette & match)

**Light fastness:** 5 (EN ISO 105-B02)

**Rubbing resistance:** 4-5 (Wet/Dry) (EN ISO 105-X12)

**Picking resistance:** 5 (EN ISO 12945-2)

**Environmental facts:** Oeko-Tex® Standard 100, ISO 14001 Certified company

**Cleaning and disinfection:** Dry cleaning with tetrachlorethylene and aqueous solution of carbonate fluoride



NX-16

NX-14

NX-12

NX-10

NX-15

NX-11

NX-7

NX-1

## CURA (GABRIEL) - PRICE GROUP 1

Cura is a two-coloured fabric made from 98% post-consumer recycled polyester. It has a matt, slightly irregular and natural-looking texture where the dark, underlying grey fibers create a discreet yet vibrant melange effect. High durability and stretchability and its soft, voluminous touch make Cura suitable for both office and lounge furniture.

**Composition:** 98% post-consumer recycled polyester, 2% polyester

**Weight:** 420 g/lm

**Abrasion resistance:** 100 000 Martindale (EN ISO 12947-2)

**Flammability:** BS EN 1021: 1-2, BS 5852 0&1, CA TB 117-2013, ASTM E 84 Class I

**Light fastness:** 5-8 (EN ISO 105 - B02)

**Rubbing fastness:** 4-5/4-5 (Wet/Dry) (EN ISO 105X12)

**Pilling:** 4-5 (EN ISO 12945-2)

**Environmental facts:** EU Ecolabel, Oeko-Tex® Standard 100, Contains no Flame Retardant chemicals, ISO 14001 certified company

**Design:** Cenk Kivrikoglu

**Produced in:** Lithuania

**Cleaning:** Wash or dry cleaning, Can be disinfected with ethanol and is bleach-cleanable (For further info follow Gabriel´s cleaning guidelines – [www.gabriel.dk](http://www.gabriel.dk))



60999

60109

60110

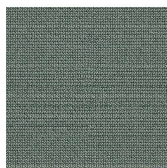
61168

66165

66170

66167

68182



68186



62083

## MEDLEY (GABRIEL) - PRICE GROUP 1

Medley is a polyester fabric constructed from melange yarns in a simple, geometric structure. Its tight texture and changing structure of the yarn create a lively colour effect on the surface.

**Composition:** 100% polyester

**Weight:** 364 g/m<sup>2</sup>

**Abrasion resistance:** 75 000 Martindale (EN ISO 12947-2)

**Flammability:** BS EN 1021: 1-2 (Cigarette & match), CA TB 117-2013, BS 5852 0&1

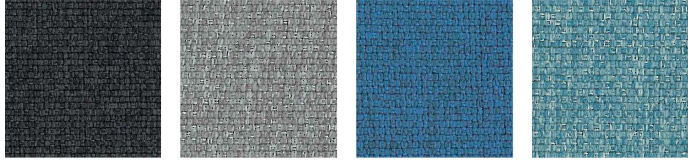
**Light fastness:** 5-7 (EN ISO 105-B02)

**Rubbing fastness:** 4-5 (Wet/Dry) (EN ISO 105-X12)

**Pilling resistance:** 4 (EN ISO 12945-2)

**Environmental facts:** Oeko-Tex® Standard 100, no flame retardant chemicals, recyclable, ISO 14001 certified company

**Cleaning & disinfection:** Washable up to 74° and bleach cleanable. (For further info follow Gabriel's cleaning guidelines [www.gabriel.dk](http://www.gabriel.dk))



60999

60003

66007

67006

## SPRINT (CAMIRA) - PRICE GROUP 1

Sprint is a classic stretch knit fabric made from 100% polyester. It has a multi-directional stretch with a design based on a smooth cellular construction that add a smooth and light expression.

**Composition:** 100% polyester

**Weight:** 325 g/m<sup>2</sup>

**Abrasion:** > 100 000 Martindale

**Flammability:** BS EN 1021: 1&2 (Cigarette & match), BS 7176: 2007 Low Hazard, BS 476 Part 7 Class 1, UNI 9175 Klasse 1 IM, CA TB 117-2013

**Light fastness:** 5 (EN ISO 105-B02)

**Rubbing fastness:** 4/4 (Wet/Dry) (EN ISO 105X12)

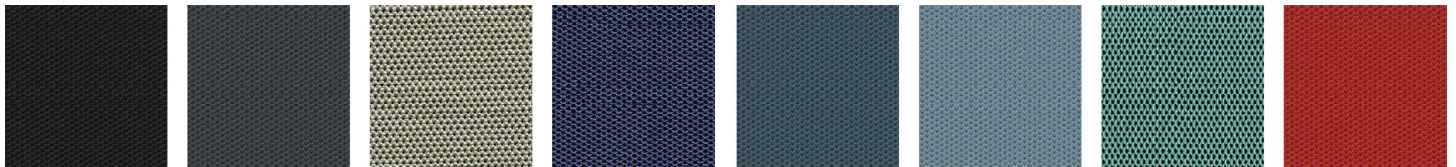
**Pilling:** 4/5 (BS EN ISO 12945-2)

**Environmental facts:** Non metallic dyestuffs, Indoor Advantage™ "Gold", ISO 14001 certified company

**Design:** Camira Design Studio

**Produced in:** China & United Kingdom

**Cleaning & disinfection:** Washable to 60 °C and bleach cleanable (For further info follow Camira's cleaning guidelines - [www.camirafabrics.com](http://www.camirafabrics.com))



PS004

PS030

PS028

PS033

PS040

PS039

PS041

PS010

## TONAL (GABRIEL) - PRICE GROUP 1

Tonal is a post-consumer recycled polyester fabric in a two-coloured melange. It has a discreet textured look with a fusion of light and dark tones adding depth to the colours.

**Composition:** 99% post-consumer recycled polyester, 1% polyester

**Weight:** 315 g/m<sup>2</sup>

**Abrasion resistance:** 100 000 Martindale (EN ISO 12947-2)

**Flammability:** BS EN 1021: 1-2, BS 476 Part 7 class 1, CA TB 117-2013, ASTM E 84 Class I

**Light fastness:** 6-8 (EN ISO 105 - B02)

**Rubbing fastness:** 4-5/4-5 (Wet/Dry) (EN ISO 105X12)

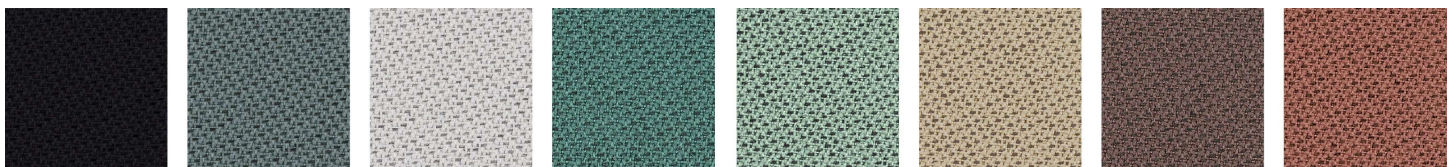
**Pilling:** 4-5 (EN ISO 12945-2)

**Environmental facts:** EU Ecolabel, Oeko-Tex® Standard 100, Contains no Flame Retardant chemicals, ISO 14001 certified company

**Design:** Cenk Kivrikoglu

**Produced in:** Lithuania

**Cleaning:** Wash or dry cleaning. Can be disinfected with ethanol and is bleach-cleanable (For further info follow Gabriel's cleaning guidelines - [www.gabriel.dk](http://www.gabriel.dk))



60999

60124

60122

67090

67089

61180

64211

64210

## VALENCIA - PRICE GROUP 1

Valencia is a PVC based syntehtic leather with a leather grain look. It has a Permblok3 finish adding protection against growth of fungi and bacterias making it suitable for healthcare environments. With high durability and flammability performance, and easy cleanable on a regular basis.

**Composition:** 100% PVC (100% polyester backing)

**Weight:** 650 gr/m<sup>2</sup>

**Abrasion resistance:** >300 000 Martindale (EN ISO 12947-2)

**Flammability:** BS EN 1021: 1-2 (Cigarette & match), IMO FTP 2010 Code MSC.307 (88) Part 8 3.1 & 3.2, CA TB 117-2013 Section E, DIN 4102 B2, NF P 92-503/M2, UNI 9175 (1987) / UNI 9175/FA1 (1994) Classe 1.IM (UNO I EMME)

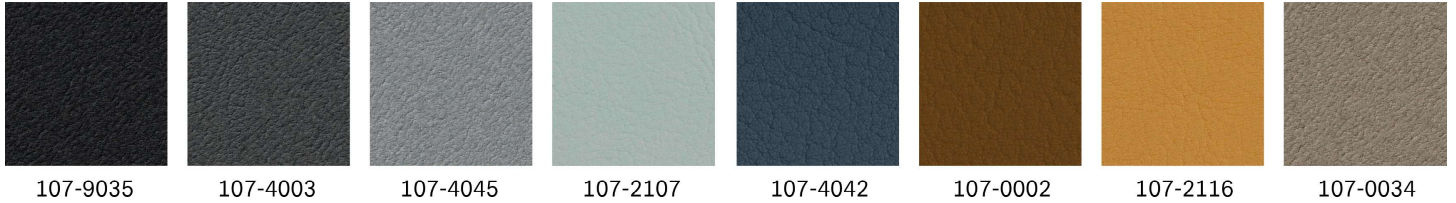
**Light fastness:** 7/8 (Blue Wool scale) ISO 105 B02

**Environmental facts:** Greenguard gold, ISO 14001 certified company, Indoor Air Emission A+

**Design:** Spradling Design Team

**Produced in:** Germany

**Cleaning & disinfection:** For info follow cleaning guidelines [www.spradling.com](http://www.spradling.com)



## XTREME (CAMIRA) - PRICE GROUP 1

Xtreme is a crepe fabric made from 100% post-consumer recycled polyester that features exceptional Euro flammability performance. Extra stretch and structure gives an irregular, shiny finish.

**Composition:** 100% post-consumer recycled polyester

**Weight:** 310 g/m<sup>2</sup>

**Abrasion resistance:** >100 000 Martindale (EN ISO 12947-2)

**Flammability:** BS EN 1021: 1-2 (Cigarette & match), BS 7176 Low & Medium Hazard, BS 5852 Section 4 Crib 5, DIN 4102 B1, UNI 9175 Class 1 IM, NF D 60-013

**Light fastness:** 6 (EN ISO 105 - B02: 2013)

**Rubbing fastness:** 4/4 (Wet/Dry) (EN ISO 105X12)

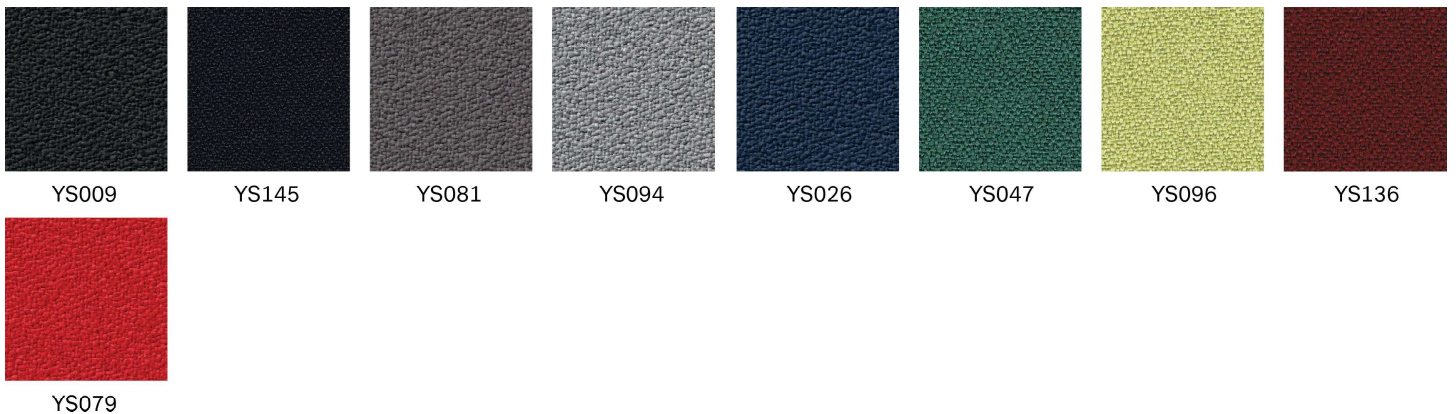
**Pilling:** 5 (EN ISO 12945-2)

**Environmental facts:** EU Ecolabel, Oeko-Tex® Standard 100, Indoor Advantage™ "Gold", non metallic dyestuffs, ISO 14001 certified company.

**Design:** Camira Design Studio

**Produced in:** United Kingdom

**Cleaning & disinfection:** Washable to 60 °C and bleach cleanable (For further info follow Camira's cleaning guidelines – [www.camirafabrics.com](http://www.camirafabrics.com))



## SELECT (GABRIEL) - PRICE GROUP 2

Select is a classic woolen fabric with a tightly woven relief structure, combining excellent softness, stretch and durability. Its rich texture with the interplay of light and shadow add depth in all the colours in the palette.

**Composition:** 85% New Zealand wool, 15% polyamide

**Abrasion resistance:** 200 000 Martindale (EN ISO 12947-2)

**Flammability:** BS EN 1021: 1-2, BS 5852 0&1, BS5852 Crib 5, CA TB 117-2013, IMO MSC 307(88) Annex 1 part 8/MED registration IMO

**Light fastness:** 5-8 (EN ISO 105 - B02)

**Rubbing fastness:** 4-5/4-5 (Wet/Dry) (EN ISO 105X12)

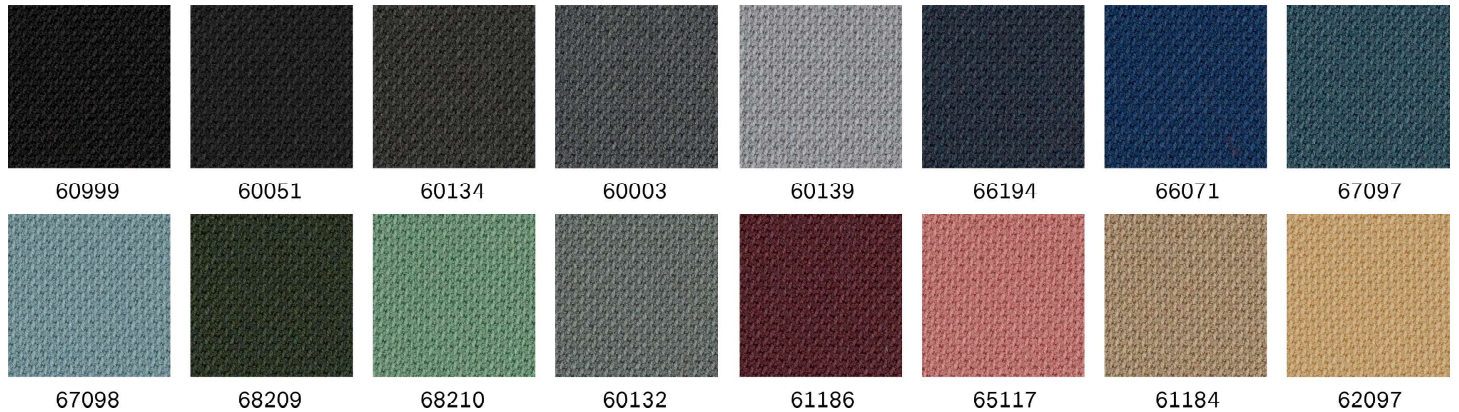
**Pilling:** 4 (EN ISO 12945-2)

**Environmental facts:** EU Ecolabel, Oeko-Tex® Standard 100, 100% free of heavy metals, ISO 14001 certified company

**Design:** Cenk Kivrikoglu

**Produced in:** Lithuania

**Cleaning:** Professional dry cleaning (For further info follow Gabriel's cleaning guidelines - [www.gabriel.dk](http://www.gabriel.dk))



## CAPTURE (GABRIEL) - PRICE GROUP 3

Capture is a lightly felted and multi-coloured wool fabric combining softness, stretch and strenght. It fuses light and dark colours to a refined melange pattern in subtle nuances, which add richness and depth to the design.

**Composition:** 85% New Zealand wool, 15% polyamide

**Abrasion resistance:** 200.000 Martindale (EN ISO 12947-2)

**Flammability:** BS EN 1021: 1-2 (Cigarette & match), BS 5852 Part 1 0,1 (Cigarette & match), CA TB 117-2013, Class Uno UNI 9175 Class 1 IM

**Light fastness:** 5-7 (EN ISO 105-B02)

**Rubbing fastness:** 4-5/4-5 (Wet/Dry) (EN ISO 105X12)

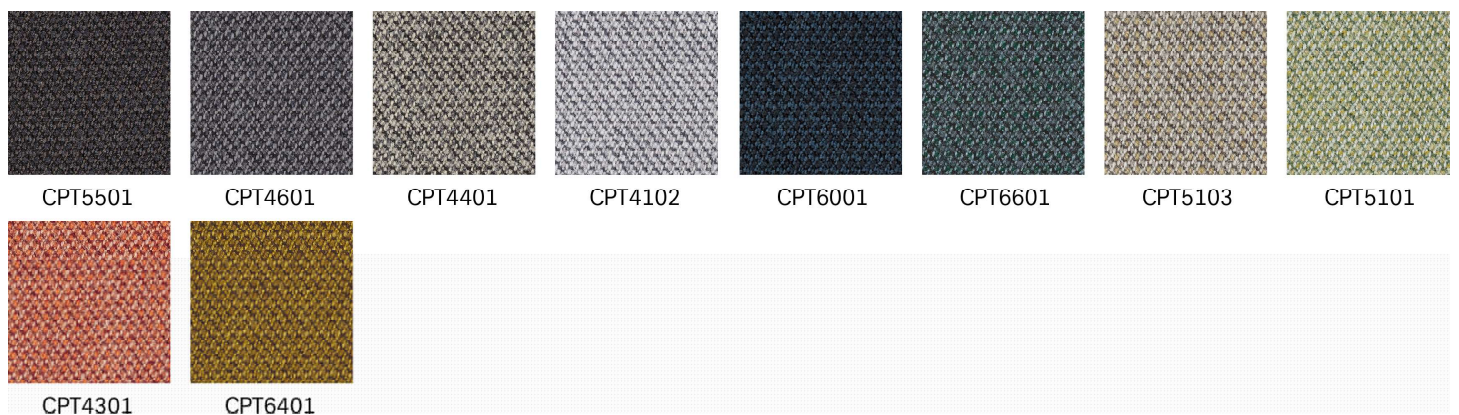
**Pilling:** 4-5 (EN-ISO 12945-2)

**Environmental facts:** EU Ecolabel, Oeko-Tex® Standard 100, 100% free of heavy metals, ISO 14001 certified company

**Design:** Cenk Kivrikoglu

**Produced in:** Lithuania

**Cleaning:** Professional dry cleaning (For further info follow Gabriel's cleaning guidelines - [www.gabriel.dk](http://www.gabriel.dk))



## OCEANIC (CAMIRA) - PRICE GROUP 3

Oceanic is made from 100 % post-consumer recycled polyester yarn where 90% are created from post-consumer plastic bottles diverted from landfill and 10% is upcycled marine plastic(from marine litter). It is a fabric born out of the SEAQUAL Initiative designed to combat marine plastic pollution and achieve a waste free environment. Oceanic has a two coloured diagonal structure with a matte surface and soft touch.

**Composition:** 100 % post-consumer recycled polyester, including 50% SEAQUAL yarn

**Weight:** 497 g/m<sup>2</sup> ±5%

**Abrasion resistance:** >100 000 Martindale (EN ISO 12947-2)

**Flammability:** BS EN 1021: 1-2 (Cigarette & match), BS 7176 Low, BS 7176 Medium Hazard with EnviroFlam5, CA TB 117-2013

**Light fastness:** 5 (EN ISO 105 - B02: 2013)

**Rubbing fastness:** 4/4 (Wet/Dry) (EN ISO 105X12)

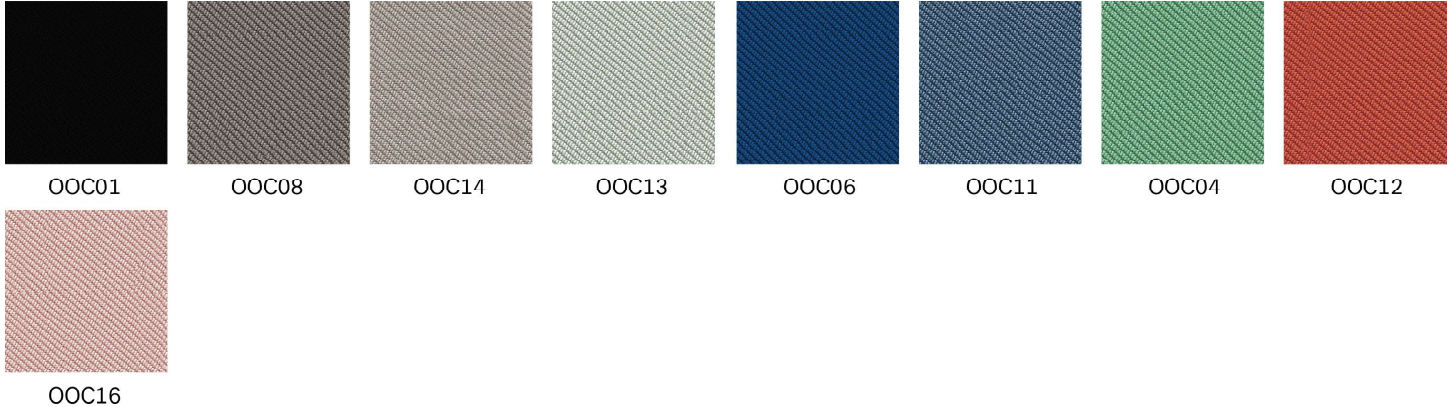
**Pilling:** 4 (EN ISO 12945-2)

**Environmental facts:** EU Ecolabel, Oeko-Tex® Standard 100, Indoor Advantage™ "Gold", non metallic dyestuffs, ISO 14001 certified company.

**Design:** Camira Design Studio

**Produced in:** United Kingdom

**Cleaning & disinfection:** Washable at 60 °C and bleach cleanable (For further info follow Camira´s cleaning guidelines – [www.camirafabrics.com](http://www.camirafabrics.com))



## STEP (GABRIEL) - PRICE GROUP 3

Step is unique in both texture and performance. With its delicate surface, Step is perceived as vivid and interesting. The texture with the fire-resistant Trevira CS yarn ensures that the fabric is suited for use in environments with high fire safety and durability requirements.

**Composition:** 100% Trevira CS

**Weight:** 336 g/m<sup>2</sup>

**Composition:** 100% Trevira cs

**Abrasion resistance:** 100 000 Martindale (EN ISO 12947-2)

**Flammability:** BS EN 1021: 1&2 (Cigarette & match), BS 5852 0&1 (Cigarette & match), BS 5852 Crib 5, CA TB 117-2013, MED Certificate IMO, Class Uno UNI 9175 Class 1 EMME, ÖNORM

**Light fastness:** 5-7 (EN ISO 105 - B02)

**Rubbing fastness:** 4-5/4-5 (Wet/Dry) (EN ISO 105X12)

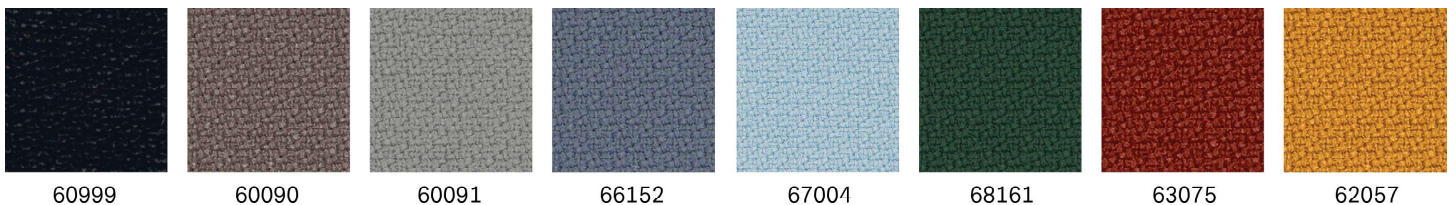
**Pilling:** 4-5 (EN ISO 12945-2)

**Environmental facts:** EU Ecolabel, Oeko-Tex® Standard 100, 100% free of heavy metals, ISO 14001 certified company

**Design:** Inger Mosholt Nielsen

**Produced in:** Lithuania

**Cleaning:** Professional dry cleaning (For further info follow Gabriel's cleaning guidelines [www.gabriel.dk](http://www.gabriel.dk))



## SYNERGY (CAMIRA) - PRICE GROUP 3

Epitomising natural simplicity, Synergy is a wool rich fabric which is at once both irresistibly soft and ultra-high performing. Delicately felted, with a beautifully relaxed drape, the understated aesthetics showcase the intriguing coloration of this considered textile.

---

**Composition:**

- 95% wool
- 5% polyamide
- **Weight:** 400 g/m<sup>2</sup>

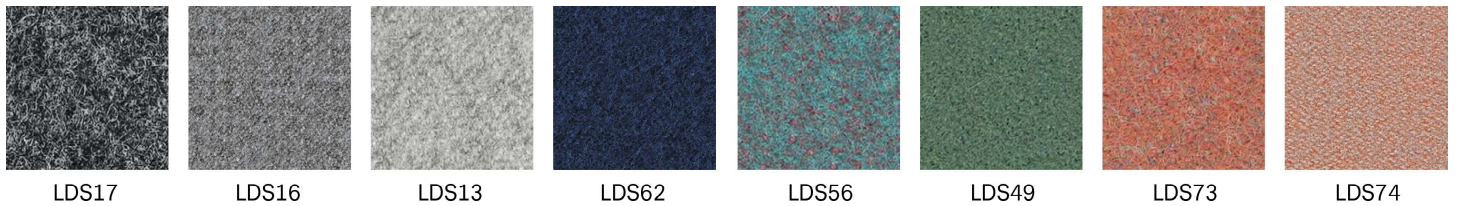
---

**Certificates:**

- **Abrasion resistance:** 100000 Martindale cycles (BS-EN ISO 12947-2)
- **Pilling resistance:** 4 (BS-EN ISO 12945-2)
- **Flammability:** cigarette (BS-EN 1021-1)
- **Flammability:** match (BS-EN 1021-2)
- **Flammability:** (UNI 9175 Class 1IM)
- **Light fastness:** 5 (ISO 105-B02)
- **Maintenance:**
  - -vacuum regularly
  - -use dry-clean preparations
  - -do not bleach

---

Because of the fact that the fabric Synergy is composed of 95% natural fiber, each of the batches shows variations in shade, which may be visible in products of follow-up orders. Additionally, an inherent feature of all natural fibers is the tendency to delicate fabric pilling.



## STEELCUT 3 (KVADRAT) - PRICE GROUP 4

Steelcut 3 is a unicoloured strong worsted wool and polyamide woven fabric, combining durability, soft touch and colour depth. The construction creates a three-dimensional surface resembling small pyramids or steel points. Despite its complex weaving technique, it has a simple and precise expression.

**Composition:** 90% worsted new wool, 10% polyamide

**Weight:** 825 g/lm

**Abrasion resistance:** 100 000 Martindale (EN ISO 12947-2)

**Flammability:** BS EN 1021: 1-2 (Cigarette & match, CA TB 117-2013, BS 5852 Crib 5 (with treatment), BS 5852 part 1, IMO FTP Code 2010 Part 8, NF D 60 013, NFPA 260, UNI 9175 1IM, ÖNORM B1/Q1, AS/NZS 3837 Class 2, ASTM E84 Class A Unadhered, ASTM 84 Class B Adhered)

**Light fastness:** 5 6 (EN ISO 105-B02)

**Rubbing fastness:** 3-5/4-5 (Wet/Dry) (EN ISO 105X12)

**Pilling:** 3-4 (EN ISO 12945-2)

**Environmental facts:** EU Ecolabel, 100% free of heavy metals, ISO 14001 certified company, GREENGUARD Gold

**Design:** Frans Dijkmeijer, Giulio Ridolfo (updated colourways)

**Produced in:** United Kingdom

**Cleaning:** Professional dry cleaning with tetrachloroethylene, normal process (For further info follow Kvadrat's cleaning guidelines – [www.kvadrat.dk](http://www.kvadrat.dk))



## STEELCUT TRIO 3 (KVADRAT) - PRICE GROUP 4

Steelcut Trio 3 is a strong worsted wool and polyamide woven fabric, made with three different coloured yarns. The colours and the special weave create a three-dimensional surface where the colours seem to change depending on the angle of perspective. Like Steelcut 3, despite the complexity of the textile's innovative weave, it has a simple, precise expression.

**Composition:** 90% worsted new wool, 10% polyamide

**Weight:** 770 g/lm

**Abrasion resistance:** 100 000 Martindale (EN ISO 12947-2)

**Flammability:** BS EN 1021: 1-2 (Cigarette & match, CA TB 117-2013, BS 5852 Crib 5 (with treatment), BS 5852 part 1, BS 5852 ignition source 3, IMO FTP Code 2010 Part 8, NF D 60 013, NFPA 260, UNI 9175 1IM, ÖNORM B1/Q1, AS/NZS 3837 Class 2, GB 50222 B1 with treatment (Chinese)

**Light fastness:** 6-7 (EN ISO 105-B02)

**Rubbing fastness:** 3-5/4-5 (Wet/Dry) (EN ISO 105X12)

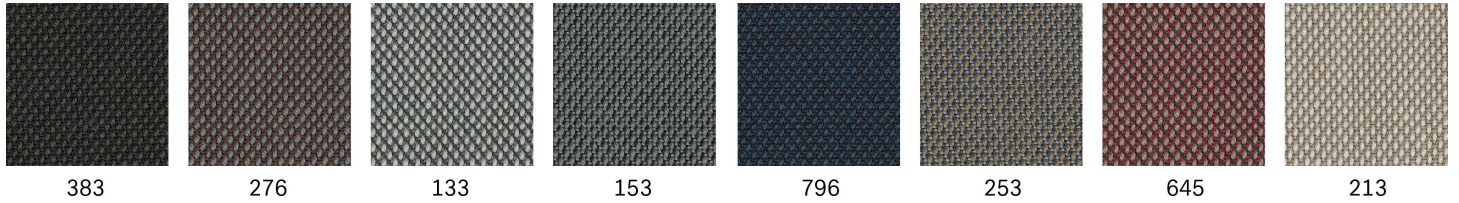
**Pilling:** 4 (EN ISO 12945-2)

**Environmental facts:** EU Ecolabel, 100% free of heavy metals, ISO 14001 certified company, GREENGUARD Gold

**Design:** Frans Dijkmeijer, Giulio Ridolfo (updated colourways)

**Produced in:** United Kingdom

**Cleaning:** Professional dry cleaning with tetrachloroethylene, normal process (For further info follow Kvadrat's cleaning guidelines – [www.kvadrat.dk](http://www.kvadrat.dk))



## LEATHER - PRICE GROUP 5

Leather (standard) is a corrected grain leather made of European cattle hides. It is through dyed with chrome tannage. Fine embossed with a smooth touch.

**Thickness:** 0.8 -1.0 mm (+/-15%)

**Flammability:** BS EN 1021: 1-2 (Cigarette & match)

**Light fastness:** 5 (EN ISO 105-B02)

**Rubbing fastness:** Wet >4/5 250 - Dry >4 500 (IUF 450)

**Environmental facts:** ISO 14001 certified company

**Produced in:** Italy

**Cleaning and care:** Please follow the guidelines of the supplier [www.marchettopellami.com](http://www.marchettopellami.com)



## PREMIUM LEATHER (GMELICH) - PRICE GROUP 6

Ascot Leather Premium is a full grain semi-aniline premium leather made from South-German and Austrian cattle hides. It is mineral tanned (chrome) with a non solvent PU-finish. It has a semi-matt appearance with a soft feel.

**Thickness:** 1,0 -1,2mm

**\*\*Flammability:** BS EN 1021: 1-2 (Cigarette & match), CA TB 117-2013

**Light fastness:** 5 (EN ISO 105-B02)

**Rubbing fastness:** Wet >3/4 80 - Dry >4 500 (EN ISO 11640)

**Environmental facts:** Blue Angel ISO 14001 certified company

**Produced in:** Germany

